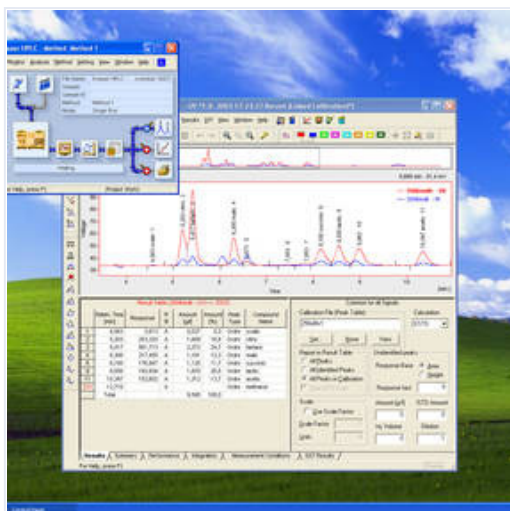
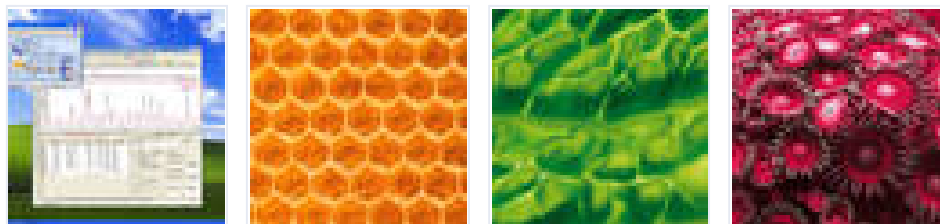


ClarityChrom Preparative 5.0.5

Article Nr.: A1685-8



(fileadmin/user_upload/produkte/files/Bilder/Produkte/produkte/software/Clarity/sw_cc_ClarifyChrom_on_Windows_XP.jpg)

ClarityChrom is an easy-to-use Chromatography Data System for workstations. The optional extensions for GC control, PDA, GPC and MS allow to use the software for a wide spectrum of application. All KNAUER devices beside the PLATINblue autosampler AS-1 and the UV detector MW-1 can be controlled. Additionally, devices and systems from more than 45 manufacturers are supported. The ClarityChromPrep includes the drivers for several fraction collectors and supports the peak recognition by level and/or slope. The manual fraction control and the option to use the KNAUER electric valves for fractionation gives you more flexibility. Please note that currently the MS cannot be used as the detector for fractionation.

single instrument license one time base



Details

Software	
Package	ClarityChromPrep
System architecture	32-bit CDS
Operating system	Windows XP, Windows Vista 32-bit and 64-bit, Windows 7 32-bit and 64-bit, Windows 8 32-bit and 64-bit
Expandability	


Stand-alone	Workstation version, max. 4 systems controlled by one computer, max. 3 complete systems recommended, max. 2 systems with PDA detector
Client/server	No Client/Server functionality
Multi-user environment	Selectable system of user accounts with independently customizable behavior and appearance for individual users
Network environment	Easy offline data sharing (at the file level) among all stations in a local network
Fields of application	Analytical HPLC, GPC/SEC, GC, MS (MS currently not possible as a detector for fractionation)
Supported instruments	All Knauer devices are supported, driver for devices from many other manufacturers are available
Instrument connection	Supports RS-232, Ethernet, PCI interface card, A/D-D/A interface
Recommended PC hardware	Pentium 2 GHz, 2 GB RAM, 10 GB free hard disk space, separate graphics card if one PC should control more than one system
Graphics capabilities	Multiple chromatogram view and overlay, PDA view
Integration	27 integration parameters (peak width, threshold, tangent slope ratio etc.) integration parameters programmable in time, automatic re-integration
Calculation types	with/without calibration (int./ext. standard method)
Security and GLP	Installation qualification test of the software; FDA 21 CFR Part 11 conformance, validation with virtual detector
Instrument control	method-based instrument control, Instrument status display and Direct-Control mode,
Calibration	6 types of calibration curves, up to 20 levels, reference peaks, groups, unlimited number of standards (peaks), LOD, LOQ
Chromatogram operations	Overlay view, custom labels and settings, also applying mathematical operations to chromatograms
Automation	Sequences, automatic launch of selected commands or applications immediately following chromatogram acquisition - Post run, Batch
Presentation of results	Integrated customizable table of results, columns with userdefined calculation, summary table, and export in text or database format
Calculations	Custom: 12 predefined mathematical operators, 15 basic and 4 summary functions, special: Kovats indexes for GC, determination of noise/drift, performance calculations
Data import and export	ASCII, AIA, dBase
Additional options/extensions	
FRC option	for preparative HPLC, adds tools for detector controlled fraction collection and solvent recycling
FRC features	Fractionation can be controlled by time (volume), level, slope including AND/OR combination of these criteria, manual control of fractionation during a run
PDA option	3D chromatogram, peak purity analysis, spectrum search in self-made or commercial spectra library




GPC/SEC option	molecular weight determination in size exclusion chromatography with various calibration methods
System suitability test	automates the calculation of system suitability parameters for system validation

Downloads



 <p>ClarityChrom Software Manual, Version 5.0.5, V1670-8</p>	<p>ClarityChrom 5.0.3 Software Manual (fileadmin/user_upload/produkte/files/Dokumente/software/claritechrom/manuals/V1670-8_C</p>
 <p>ClarityChrom Software Manual, Version 5.0.5, V1670-8A</p>	<p>ClarityChrom 5.0.3 Software Manual (fileadmin/user_upload/produkte/files/Dokumente/softwa 8A_Claritechrom_Software_Manual_V1.1.pdf)</p>

Accessories / Spare parts

	<p>ClarityChrom 5.0.5 Option (en/product/claritechchrom_505_option-2.html)</p>	<p>option for PDA data processing</p>	<p>A1676-8</p>
---	--	---------------------------------------	----------------

	ClarityChrom 5.0.5 Option (en/product/claritechrom_505_option-3.html)	system suitability option	A1677-8
	ClarityChrom 5.0.5 Option (en/product/claritechrom_505_option-1.html)	option for GPC data processing	A1678-8
	ClarityChrom 5.0.5 Option (en/product/claritechrom_505_option.html)	GC license for GC control	A1680-8

Related products

	ClarityChrom 5.0.5 (en/product/claritechrom_505.html)	single instrument license one time base	A1670-8
	OpenLAB CDS EZChrom Edition (en/product/openlab_cds_ezchrom_edition.html)	Basic Workstation license, includes System Suitability, Fraction Collector Control and Software Maintenance Agreement	A2600-1

Technical data are subject to change without notice.

© 2015 KNAUER Wissenschaftliche Geräte GmbH